



**Built to perform**



**MUTOH**

*ValueJet* Series

*ValueCut* Series



## When Quality, Flexibility and Reliability really matter!

At Mutoh, every industry development presents us with a new challenge, the challenge to improve on it and use our experience to go beyond the expected, to achieve the ideal balance between efficiency, reliability and print / cut / print-to-cut quality.

That's why Mutoh has been at the forefront of the wide-format industry for more than 20 years. As an innovative developer and manufacturer of wide-format printers and cutters, we incorporate our pioneering technology into everything we do to bring you the best equipment for your application. Our core philosophy is to deliver products with technology proven to be faster, more reliable, more cost effective and more efficient.

Applying this philosophy, we created the **ValueJet wide-format printers** and the **ValueCut cutting plotters**.

**ValueJet**  
Series

**ValueCut**  
Series

## Built to Perform

At Mutoh we understand that your equipment needs to be built to perform. That is why innovation and craftsmanship are at the heart of our ValueJet & ValueCut range.

Built to deliver fit-for-purpose quality at all times, Mutoh's ValueJet printers are tailored to your needs, enabling you to reproduce your creative ideas exactly as you intended.

The range is available in widths from 137 cm (54") to 264 cm (104") covering **Sign & Display, Indoor & Digital Transfer as well as Direct to Fabric applications**. All ValueJet printers feature best-in-class inkjet head technology, latest generation electronics and high quality inks. Overall performance is enhanced thanks to Mutoh's innovative Intelligent Interweaving technology, enabling you to deliver the right quality at the lowest cost.

Mutoh printers work as hard as you do – no more over-specified print jobs that take longer and cost more than they should, no more under-specified print jobs that result in inferior quality and risk of repeat business. It's simply 'job done' with a Mutoh ValueJet!

Mutoh's affordable ValueCut cutting plotters, available in three widths, are ready for perfect teamwork with any printer capable of printing onto PVC, for contour cutting of pre-printed signs & stickers and for regular lettering jobs.

Find out for yourself – book a demonstration at your nearest authorised Mutoh Reseller.

## > 01 Sign & Display

### Cost-Efficient Flexibility without Compromise

Mutoh ValueJet wide-format Sign & Display printers match Mutoh's passion for engineering and quality with your desire for ultimate performance and trouble-free production. They appeal to both established businesses and startups.

Compact and robustly built, they are ideal for **long term outdoor and indoor prints** on a wide range of uncoated and coated substrates: posters, banners, backlit signage, decals, wall coverings, point-of-sale displays, fine art reproduction, pop-ups, vehicle graphics, stickers and much more.

Incorporating the very latest 8-channel piezo drop-on-demand inkjet technology and new generation electronics, the third-generation ValueJet printers offer **increased print speeds and improved print quality**.

The **roll-to-roll** ValueJet printers, available in widths of 137 cm / 54", 162.5 cm / 64" and 260 cm (102") can be loaded with Mutoh Eco Ultra or Universal Mild Solvent (UMS) inks. Eco Ultra CMYK inks are available in convenient 220 and 440 ml cassettes. UMS CMYK inks are available in 440 ml cassettes and bulk 1 liter bottles for use in combination with Mutoh's optional bulk ink system. Prints made with Mutoh Eco Ultra or UMS inks are UV resistant for up to 3 years outdoors. Both inks are based on non-aggressive solvents and do not spread any harmful VOCs in the working environment. As a result, there is no need for forced ventilation.

For **roll and rigid printing**, the ValueJet Hybrid VJ-1617H model (162.5 cm / 64") is available. This model utilises Mutoh's MP11 inks (CMYK + White). Available in 950 ml bags (white : 500 ml), the multi-purpose MP11 bio inks are non petro-chemical based and offer an outdoor UV durability of up to 3 years.

The ValueJets will bring you **superior print quality** and will take the headache out of any job, for every application. Whatever the job, it's job done with the ValueJet Sign & Display range!

Mutoh's professional **ValueCut sign cutters** - available in 61 cm (24") - 132 cm (52") - 183 cm (72") widths - complement the ValueJet printer range, for **kiss-cutting, contour cutting and through-cutting applications**.

### ValueJet 1324 - 1624: Reliable workhorses with true production capabilities

The cost-effective professional single head ValueJet 1324 and 1624 models are ideal for start-up sign shops or established businesses with small to medium print volumes wanting to extend their product offering.

Flexible, reliable and able to deliver excellent print quality for volume production runs as well as short print runs, these printers will prove to be reliable workhorses for a wide range of high-quality outdoor and indoor sign & display prints.

Easy to install, use and virtually maintenance free, the compact ValueJet roll-to-roll printers can be easily located in any office environment. Integrating Mutoh's award winning Intelligent Interweaving print technology, the printers deliver sellable **production speeds up to 27.9 m<sup>2</sup>/h (VJ-1324) and 29.1 m<sup>2</sup>/h (VJ-1624)**.



> VJ-1324



> VJ-1624

> 01 Sign & Display

**ValueJet 1638 - 2638 : High quality and high speed without compromise**

Incorporating the well-known and reliable ValueJet print technology and built for both high speed & outstanding printing quality, the dual head ValueJet 1638 and 2638 models integrate the very latest piezo print heads on the market. They will address the needs of businesses focusing on both high speed production and top quality print work up to a width of 1.6 m (VJ-1638) and 2.6 m (VJ-2638).

Both models feature two 8-channel piezo heads, in a “staggered setup”, resulting in exceptional high speed printing. These ValueJets are ideal for established sign makers who need extra versatility and for larger operations wanting to extend their capacity and flexibility. They will deliver best-in-class speed and superior print quality, without compromising on image quality : **high quality production speeds up to 40 m<sup>2</sup>/h (VJ-1638) and 48.3 m<sup>2</sup>/h (VJ-2638).**



> VJ-1638



> VJ-2638

**ValueJet Hybrid 1617H : Rigid and roll-to-roll printing**

The ValueJet Hybrid printer is **Mutoh’s first wide-format printer with white inks**. Using Mutoh’s renewable resource MP11 Multi-Purpose inks, the VJ-1617H delivers high quality prints on a wide variety of rigid and roll media, such as ABS, aluminium sandwich board, cardboard, non-pvc self-adhesive media, PE, PET, PMMA, PP, PVC foam board, recyclable fibre-based paper, uncoated polyester, uncoated Tyvek, etc.

An ideal fit for print providers who supply customers demanding “green output” (recyclable media), this model is the perfect solution for start-up companies as well as established print businesses wanting short run production of roll prints and panel creation for close viewing distances.



> VJ-1617H for roll printing



> VJ-1617H for rigids

	Max. Media Width mm / inch	Max. Print Width mm / inch	Production Speed Range m <sup>2</sup> /h	Max. Speed <sup>1</sup> m <sup>2</sup> /h
ValueJet 1324	1371 / 53.97	1361 / 53.58	3.9 – 27.9	52
ValueJet 1624	1625 / 63.97	1615 / 63.58	5 – 29.1	55
ValueJet 1638	1625 / 63.97	1615 / 63.58	10 – 48	94
ValueJet 2638	2600 / 102.36	2590 / 101.97	12 – 48.3	108
ValueJet 1617H	1625 / 63.97	1615 / 63.58	3.4 – 10.1 (2xCMYK)	27
			0.4 – 2.5 (CMYK+White)	NA(*)

<sup>1</sup> = Applicability to be judged on individual basis. Media & application dependent.  
(\*) Not applicable

> 01 Sign & Display

ValueCut Series : Print and cut at the same time for maximum productivity

Built for both cutting and print-to-cut applications, ValueCut is a **high-performance cutting plotter range**, ready for perfect teaming up with any ValueJet sign & display printer. Enabling the **finest cutting quality with excellent tracking**, the series is available in three models; i.e. ValueCut 600, ValueCut 1300 and ValueCut 1800.

There are many advantages to using a separate printer and cutter workflow, including the ability to print and cut on two machines simultaneously. The Mutoh print-to-cut solution allows you to maintain a productive workflow. ValueCut integrates a unique job position feature allowing you to reliably contour cut your stickers. The multi-segment feature will allow you to (contour) cut over long lengths with superior accuracy.

The affordable ValueCut cutting plotters will enable signmaking professionals to cover a wide range of applications : window displays, vinyl stickers, vehicle graphics, car stickers, point of purchase, packaging, funny bumper stickers, safety signs, etc..



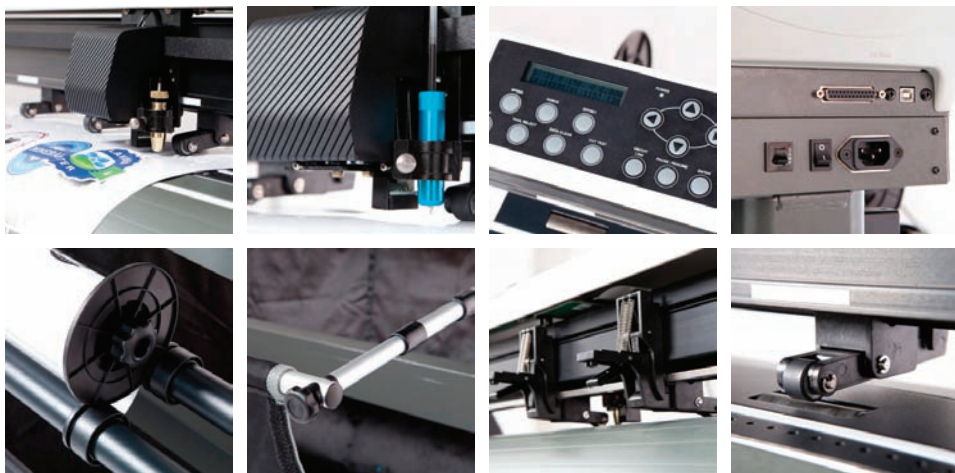
> VC-600



> VC-1300



> VC-1800



	ValueCut 600	ValueCut 1300	ValueCut 1800
Media Loading Width (roll & sheet)	50 - 770 mm	50 - 1594 mm	300 - 1900 mm
Max. Cutting Width	610 mm	1320 mm	1830 mm
Max. Media Thickness	0.8 mm	0.8 mm	0.8 mm
Pinch Rollers	3	4	6
Max. Speed (axial / diagonal)	1080 / 1530 mm/s	1080 / 1530 mm/s	1080 / 1530 mm/s
Acceleration (axial / diagonal)	3.0 / 4.2 G	3.0 / 4.2 G	3.0 / 4.2 G
Max Cutting Force	600 g	600 g	600 g

> 02 Direct Textile

**The Green Option for Short Run, Personalised High Value Products**

Backed by Mutoh expertise and engineering, Mutoh direct-to-textile printers are suited for the production of high quality company flags, country flags, beach flags, personalised advertising, textile gadgets, clothing as well as home decoration fabrics.

Digitally printed fabrics can be easily personalised and sold as high value products with a “green” label. Textile prints are more easily re-usable as well as lightweight and readily foldable to make transport far more energy and emission efficient.

**Mutoh direct disperse inks** for use on polyester fabrics are free from VOCs and hazardous components. On open structure fabrics, they provide excellent print-through for double sided flags. The inks offer a high outdoor durability (up to 1 year) and prints are moreover washable.

**ValueJet TD Printers – Highest print quality & extremely versatile**

The ValueJet TD series incorporate 8 ink slots and two high end piezo drop on demand 1440 nozzle heads mounted in-line. This will enable users to run 2 times CMYK (high density setup), 8 colours (high gamut setup) or even to run 2 types of ink simultaneously (dye sublimation inks and direct disperse inks). Ultra fine quality prints can be produced, at resolutions up to 1440 dpi.

Setup for **direct-to-fabric printing**, the ValueJet TD can print on recyclable non-stretch polyester fabrics with open or closed structure. This is made possible by the incorporated ink gutter positioned under the printing path, which collects all the ink that is not absorbed by the fabric. By covering the ink gutter with the easy ‘clickable’ ink gutter covers, the ValueJet TD can also be used for **sublimation printing onto transfer paper**. Head height is adjustable up to 4 mm, offering maximum substrate compatibility.

Dedicated textile printing features have been integrated to enable smooth and worry-free media handling, e.g. a tensioning mechanism at the back of the machine which compensates for media expansion during printing. ValueJet TD can run with open ink cassettes or with Mutoh’s optional bulk ink system. Different motorised take-up systems are available to perfectly match your production volume.



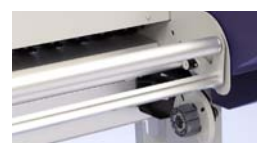
> VJ-1628TD



> VJ-2628TD



> Adjustable print platform



> Tensioning mechanism

	Max. Media Width mm / inch	Max. Print Width mm / inch	Production Speed Range m <sup>2</sup> /h	Max Speed <sup>1</sup> m <sup>2</sup> /h
ValueJet 1628TD	1625 / 63.97	1605 / 63.18	8 – 24	41.5
ValueJet 2628TD	2642 / 104.01	2622 / 103.22	8 - 24	41.5

<sup>1</sup> Applicability to be judged on individual basis. Media & application dependent.

## > 03 Indoor & Digital Transfer

### Soft Signage : Don't Miss the Opportunity !

Expand your business beyond vinyl and banner printing by adding soft signage production to your portfolio with Mutoh's ValueJet water-based printer series, available in widths of 162.5 cm / 64" and 260 cm /102". Explore new revenue opportunities such as high quality in-store textile decoration and displays, textile banners, pop-ups, sportswear, personalised home decoration, gadgets, shirts and many more.

In dye sublimation printing, images are printed in reverse onto transfer paper. After printing, a heat press or calender fixes the images onto polyester-based textiles. The heat process bonds the images permanently into the fabric. **Colours are bright and vibrant. Outputs are durable & washable.** Importantly, unlike other inkjet technologies, the sublimation process does not affect the handling and feel of the material.

### Produce with the environment in mind

Using Mutoh's water-based dye sublimation inks and easily available uncoated recyclable polyester-based materials means there is no need for forced ventilation, as the **inks are free from VOCs and hazardous components.** The prints are also odourless. Soft signage is much easier to pack & ship which reduces transport costs, as it folds easily to reduce space and is of course extremely lightweight. An important plus is that soft signage can be washed (if necessary) and re-used with no fade.

### Increase your profit margins

Water-based dye sub inks, available in bulk bottles, will enable you to lower your cost per copy. Paper prints are produced faster, which increases your productivity. You work with uncoated low-cost readily available polyester fabrics. Plus you offer a higher end luxurious product with premium appearance, touch and feel, which can be sold at a higher price compared to regular vinyl, paper and banner prints.

Mutoh provides turnkey solutions including printer, inks, software and after-treatment equipment – all you need to make a flying start into dye sublimation.

#### ValueJet 1624W - A smart choice for every day sublimation printing

The compact ValueJet 1624W printer is ideal for every day sublimation printing. It is fit for both startup and established businesses wanting to extend their product portfolio.

The machine will deliver a unique mix of high quality output and high speed printing. You don't need to be an expert to run the VJ-1624W as the unit is very easy to operate and maintain. Competitively priced, the printer delivers consistent quality for volume production runs as well as short print runs.

Featuring a latest generation 8-channel piezo print head with 8 rows of 180 nozzles, VJ-1624W delivers **sellable production speeds up to 38 m<sup>2</sup>/h.** Ready for volume production, the printer can be equipped with various optional motorised take-up systems.



> VJ-1624W

> 03 Indoor & Digital Transfer

ValueJet 1638W - 2638 - Unrivalled performance for professional volume users

The ValueJet 1638W (162.5 cm – 64”) and VJ-2638 (260 cm – 102”) dual head high speed, high volume sublimation inkjet printers effortlessly deliver **sellable production speeds up to 65 m<sup>2</sup>/h (VJ-1638W) and 72 m<sup>2</sup>/h (VJ-2638)**. Ideally suited for users requiring speed who also put high quality at the top of their wish list!

The fastest transfer paper printers in their price range, the VJ-1638W/VJ-2638 **will print onto the thinnest sublimation papers**. They incorporate the very latest 8-channel piezo head technology. Both models feature two print heads, in a “staggered setup”, resulting in exceptional high speed printing without compromising on image quality.

Long unattended print runs are made possible thanks to Mutoh’s optional bulk ink system and a variety of automatic motorised winder systems that will neatly roll up prints, ready for after-treatment.



> VJ-1638W



> VJ-2638

	Max. Media Width mm / inch	Max. Print Width mm / inch	Production Speed Range m <sup>2</sup> /h	Max Speed <sup>1</sup> m <sup>2</sup> /h
ValueJet 1624W	1625 / 63.97	1615 / 63.58	9 – 38	55
ValueJet 1638W	1625 / 63.97	1615 / 63.58	11 – 65	94
ValueJet 2638	2600 / 102.36	2590 / 101.97	12 – 72	108

<sup>1</sup>. Applicability to be judged on individual basis. Media & application dependent.

UniFixer 65 - Permanent results with flying colours

To finish your prints, Mutoh offers the UniFixer 65 (1700 mm – 67”) calender. UniFixer will heat transfer dye sublimation prints from paper to fabric or heat fix direct printed polyester fabrics. The calender offers rapid response heating via an oil-free rotating drum with quartz heating.

For businesses focusing on piece production of e.g. pre-cut customised stretch sportswear, an optional table is available for the Mutoh UniFixer.



> UniFixer 65 with optional table



> UniFixer 65

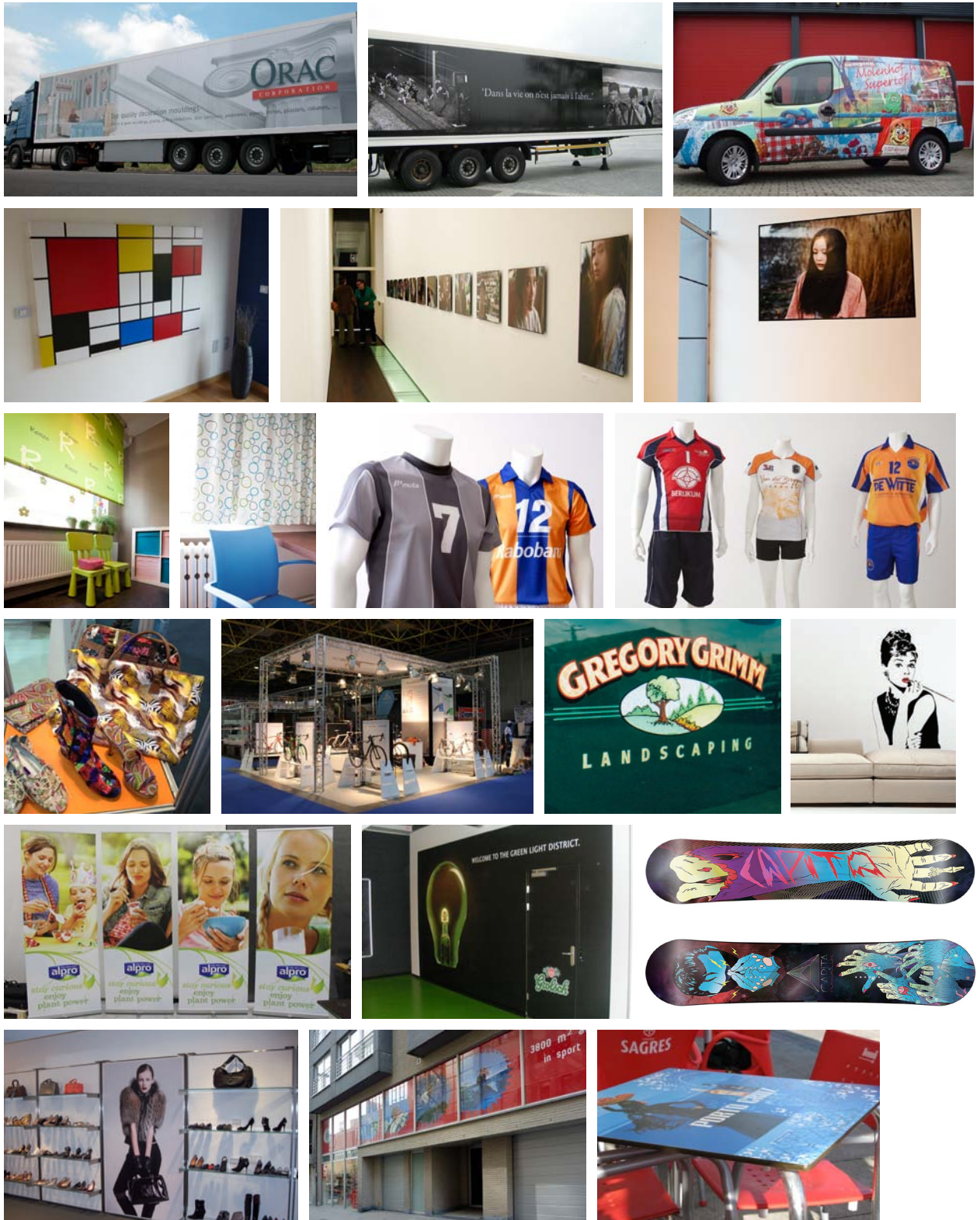


> 04 Applications

YES, WE CAN !

Mutoh printers and cutting plotters will assist you to turn all your ideas into reality. They will enable you to deliver high quality results that will impress customers and create lasting value, the best guarantee for return business.

Backlit panels, banners, billboards, building announcements, car stickers, curtains, display fabrics, fine art reproductions, flags, gadgets, interior decoration, high quality wide-format photo prints, pop-ups, retail posters, safety stickers, signs, vehicle wraps, wall stickers, sportswear, .....



## > 05 Accessories & Software

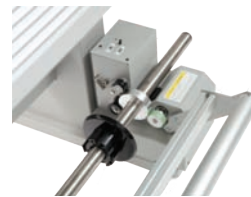
### Reliable Accessories to Complete a Seamless Solution

Mutoh's core philosophy is to deliver you a robust printer ready for day to day production with reliable inks that are perfectly matched to your application. To complete your ValueJet solution and configure it to your target print volume, we supply a range of optional accessories to make your production process easier, faster and hassle-free.

Our accessories include bulk ink systems for long autonomy, different types of motorised unwinding/winding systems (30, 80 and 100 kg) to match your print volumes and infra red dryers.



> 80 kg motorised take-up system with tensioning bar



> 30 kg motorised take-up system with tensioning bar



> torque-controlled motorised take-up system



> Bulk Ink System



> IR Dryer

### Software that Meet your Needs

Mutoh works with all the leading RIP vendors so that you have a choice dependent on budget and application for whichever ValueJet you choose.

Special Mutoh Edition RIP software is available from EasySign, Onyx Graphics and SAi, covering our entire printer and cutter portfolio and we offer our own Caldera-engineered GRIP / GRIP Plus RIP solutions too.

Whatever your preference of RIP, your investment is safe, since all Mutoh Edition RIP solutions can be easily upgraded as your business grows with either new or extra equipment.



### Media

As with our RIP strategy, we work with all the major media suppliers during the development process to ensure our printers deliver Mutoh quality output across a broad range of substrates.

Mutoh printer users can benefit from our extensive ICC/media profile library available on the member site at [www.mutoh.eu](http://www.mutoh.eu)

## > 05 Mutoh Inks

### Peace of Mind with Mutoh Original Inks

Ink is a crucial part of the printing process. Using inks that work together faultlessly with the print head and media in production to give you optimum performance and output quality is an area Mutoh invest heavily in. We are constantly testing the latest inks and print head technologies in our own chemical labs, to ensure that you are provided with inks that perfectly match your Mutoh system and supplies and that moreover meet the latest REACH regulations.

By conducting stringent quality control, we are able to guarantee batch-to-batch consistency, a perfect match between ink and print head and unequivocal warranties for durability and quality.

Depending on your application, we supply the right ink for our ValueJet range of printers:

**Mutoh Eco Ultra inks** are Mutoh's most popular inks for outdoor sign & display applications on a wide range of uncoated and coated substrates. The inks are based on non-aggressive solvents and do not spread any harmful VOCs in the working environment. As a result, there is no need for forced ventilation.

Available in easy-to-use cassettes, Eco Ultra inks are Mutoh's third generation of eco inks featuring improved ink fixation, better drying and improved scratch resistance. Last but not least, they enable higher print speeds. Prints made with Eco Ultra inks are water-resistant and offer a UV outdoor resistance of up to three years.\*

\* : For heavy-duty applications where mechanical stress is involved (floor & vehicle graphics), lamination is required. Stabilisation is required prior to lamination.



**Mutoh MP11 Multi-Purpose CMYK + White inks** for the ValueJet VJ-1617H model are suited for both rigid and roll media. The inks will deliver high quality prints on a wide range of uncoated environmentally friendly low-cost substrates. Compatible media types are ABS, aluminium sandwich board, cardboard, non-pvc self-adhesive media, PE, PET, PMMA, PP, PVC foam board, recyclable fibre-based paper, uncoated polyester, uncoated Tyvek, etc. The inks come in convenient ink packs - CMYK (950 ml) + White (500 ml). The key carrier of the MP11 inks is a renewable resource solvent, derived from corn. The inks are fixed and dried at regular heating temperatures and offer an extensive colour gamut. UV durability outdoors goes up to three years.



> 05 Mutoh Inks

**Mutoh's Universal Mild Solvent inks (UMS)** are Mutoh's fourth generation mild solvent inks. The UMS inks have been specifically developed for volume-oriented users. Available in cassettes & bulk liter bottles, the UMS inks feature best-in-class ingredients for optimum speed and quality performance.

The inks are based on a new selection of milder & non-aggressive solvents and do not spread any harmful VOCs in the working environment. They are virtually odour-free and do not require any forced ventilation. The Mutoh UMS CMYK ink set covers 83 % of the Pantone C® colour chart.

The unique mix of nano size, high durability pigments & resins will individually encapsulate each colour pigment, enables optimum adhesion of the pigments to the substrate and creates a uniform, smooth - gloss preserving - ink layer. Prints made with UMS inks are water resistant and offer an outdoor UV-resistance of up to three years\*.

\* : For heavy-duty applications where mechanical stress is involved (floor & vehicle graphics), lamination is required. Stabilisation is required prior to lamination.



**Mutoh disperse dye sublimation inks** have been developed for printing on transfer paper & transfer to polyester fabrics & mixed fibre fabrics (minimum 80 % polyester) or to coated polyester objects. Mutoh's dye sub inks are 100 % VOC free and do not contain any hazardous components. They offer excellent nozzle stability for high speed and high volume printing and a UV outdoor durability between 3 and 6 months.

**Mutoh Direct Disperse inks** are suited for direct printing onto polyester fabrics with open or closed structure. On open structure fabrics, they provide excellent print-through for double sided flags. They are 100 % VOC free and do not contain any hazardous components. Mutoh direct disperse inks offer a large colour gamut for rich and vibrant colours and deliver top scores in light fastness, wash fastness, rubbing and perspiration.

**Mutoh Dye & Pigmented CMYK water-based VOC free inks** offer a wide colour gamut, superior line output and sharp edges, ideal for high quality poster printing. Whereas the Mutoh dye based inks are suited for interior prints, Mutoh pigmented inks are ideal for long-term indoor graphics as well as for short term outdoor applications.

Ink Type	Eco Ultra		UMS		MP11 <small>(renewable resource)</small>		Dye & Pigmented	Disperse Dye Sublimation	Direct Disperse
	CMYK		CMYK		CMYK	White	CMYK	CMYK	CMYK
Ink Volume	220 ml C	440 ml C	440 ml C	1000 ml B	950 ml P	500 ml P	220 ml C	1000 ml B	1000 ml B
ValueJet 1324	X			X					
ValueJet 1624 / 1638	X	X	X	X					
ValueJet 2638	X	X	X	X				X	
ValueJet 1617H					X	X			
ValueJet 1624W / 1638W							X	X	
ValueJet 1628TD / 2628TD								X	X

C = cassette / P = pack / B = bottle

## > 06 Specifications - Performance

### Technical Key Specifications

Head Technology	Drop-on-demand Micro Piezo Inkjet Technology
Print Technology	i2 Intelligent Interweaving inside
Print Head(s)	1 head (VJ-1324 / VJ-1624 / VJ-1624W / VJ-1617H)
	2 heads - staggered (VJ-1638 / VJ-2638 / VJ-1638W)
	2 heads - in-line (VJ-1628TD / VJ-2628TD)
Nozzle Configuration	180 nozzles x 8 lines per head
Power Supply	AC 100-120 V / AC 200-240 - 60/50 Hz

### Print Speeds

#### > 01 Sign & Display

	Quality m <sup>2</sup> /h (resolution)	Production m <sup>2</sup> /h (resolution)	Billboard m <sup>2</sup> /h (resolution)	Max. Speed <sup>1</sup> m <sup>2</sup> /h (resolution)
ValueJet 1324	5.9 (720x720)	11.8 (720x720)	27.9 (360x720)	52 (360x360)
ValueJet 1624	7.5 (720x720)	14.5 (720x720)	29.1 (360x720)	55 (360x360)
ValueJet 1638	15.0 (720x1440)	36.0 (720x720)	48.0 (360x720)	94 (360x360)
ValueJet 2638	17.0 (720x1440)	40.0 (720x720)	48.3 (360x720)	108 (360x360)
ValueJet 1617H (2 x CMYK)	3.4 (720x1080)	6.7 (720x1080)	10.1 (540x720)	27 (360x720)
ValueJet 1617H (CMYK + White)	0.8 (720x720)	2.5 (720x540)	NA (*)	NA (*)

<sup>1</sup> Applicability to be judged on individual basis. Media & application dependent.  
(\*) Not Applicable

#### > 02 Direct Textile

	Quality m <sup>2</sup> /h (resolution)	Production m <sup>2</sup> /h (resolution)	Billboard m <sup>2</sup> /h (resolution)	Max. Speed <sup>1</sup> m <sup>2</sup> /h (resolution)
ValueJet 1628TD	8.0 (540x720)	11.5 (720x720)	24.0 (360x720)	41.5 (360x360)
ValueJet 2628TD	8.0 (540x720)	11.5 (720x720)	24.0 (360x720)	41.5 (360x360)

<sup>1</sup> Applicability to be judged on individual basis. Media & application dependent.

#### > 03 Indoor & Digital Transfer

	Quality m <sup>2</sup> /h (resolution)	Production m <sup>2</sup> /h (resolution)	Billboard m <sup>2</sup> /h (resolution)	Max. Speed <sup>1</sup> m <sup>2</sup> /h (resolution)
ValueJet 1624W	12.5 (720x1080)	20.5 (360x720)	38.0 (360x360)	55 (360x360)
ValueJet 1638W	20.0 (720x1080)	42.0 (360x720)	65.0 (360x360)	94 (360x360)
ValueJet 2638	22.0 (720x1080)	46.0 (360x720)	72.0 (360x360)	108 (360x360)

<sup>1</sup> Applicability to be judged on individual basis. Media & application dependent.

For individual datasheets per product and detailed specifications, please visit [www.mutoh.eu](http://www.mutoh.eu)

> 06 Specifications - Performance

Media Measurements

> 01 Sign & Display

	Max Media Width		Max Print Width		Max Media Thickness	Media Core / Diameter / Weight		
	mm	inch	mm	inch	mm	inch	mm	kg**
ValueJet 1324	1371	53.97	1361	53.58	0.3 / 1.3*	2 or 3	150	19
ValueJet 1624	1625	63.97	1615	63.58	0.3 / 1.3*	2 or 3	150	30
ValueJet 1638	1625	63.97	1615	63.58	0.3 / 1.3 / 2.8*	2 or 3	150	30
ValueJet 2638	2600	102.36	2590	101.97	0.3 / 1.3 / 2.8*	2 or 3	250	100***
ValueJet 1617H	1625	63.97	1615	63.58	15	2 or 3	150	30

(\*): Max. media thickness is specified per head height  
 (\*\*): Standard non-motorised roll-off system  
 (\*\*\*): Standard motorised unwinding / winding system

> 02 Direct Textile

	Max Media Width		Max Print Width		Max Media Thickness	Media Core / Diameter / Weight		
	mm	inch	mm	inch	mm	inch	mm	kg
ValueJet 1628TD	1625	63.97	1605	63.18	0.3 / 1.3 / 2.8*	3	200	30**
ValueJet 2628TD	2642	104.01	2622	103.22	0.3 / 1.3 / 2.8*	3	200	100***

(\*): Max. media thickness is specified per head height  
 (\*\*): Standard non-motorised roll-off system  
 (\*\*\*): Standard motorised unwinding / winding system

> 03 Indoor & Digital Transfer

	Max Media Width		Max Print Width		Max Media Thickness	Media Core / Diameter / Weight		
	mm	inch	mm	inch	mm	inch	mm	kg**
ValueJet 1624W	1625	63.97	1615	63.58	0.3 / 1.3 / 2.8*	2 or 3	150	30
ValueJet 1638W	1625	63.97	1615	63.58	0.3 / 1.3 / 2.8*	2 or 3	150	30
ValueJet 2638	2600	102.36	2590	101.97	0.3 / 1.3 / 2.8*	2 or 3	250	100***

(\*): Max. media thickness is specified per head height  
 (\*\*): Standard non-motorised roll-off system  
 (\*\*\*): Standard motorised unwinding / winding system

For individual datasheets per product and detailed specifications, please visit [www.mutoh.eu](http://www.mutoh.eu)

## > 06 Specifications - Performance

### Power Consumption & Measurements

#### > 01 Sign & Display

	Sleep / Stand-by	During Printing	Width x Depth x Height	Weight
ValueJet 1324	30 W / 45 W	< 500 W	1916 x 685 x 1218 mm	82.3 kg
ValueJet 1624	30 W / 45 W	< 600 W	2698 x 885 x 1261 mm	160 kg
ValueJet 1638	30 W / 45 W	< 650 W	2698 x 885 x 1261 mm	221 kg
ValueJet 2638	40 W / 160 W	< 1000 W	3708 x 885 x 1261 mm	283 kg
ValueJet 1617H (roll)	- / < 65 W	< 2500 W	2698 x 818 x 1302 mm	234.5 kg
ValueJet 1617H (rigid)	- / < 65 W	< 2500 W	2698 x 2486 x 1302 mm	319.5 kg*

(\*) Including tables

#### > 02 Direct Textile

	Sleep / Stand-by	During Printing	Width x Depth x Height	Weight
ValueJet 1628TD	45 W / 110 W	< 200 W	2698 x 950 x 1262 mm	201 kg
ValueJet 2628TD	45 W / 110 W	< 300 W	3708 x 950 x 1262 mm	256 kg

#### > 03 Indoor & Digital Transfer

	Sleep / Stand-by	During Printing	Width x Depth x Height	Weight
ValueJet 1624W	24 W / 38 W	< 210 W	2698 x 885 x 1261 mm	160 kg
ValueJet 1638W	24 W / 38 W	< 200 W	2698 x 885 x 1261 mm	219 kg
ValueJet 2638	40 W / 160 W	< 1000 W	3708 x 885 x 1261 mm	283 kg

### Recommended Working Environment

Temperature

22°C - 30°C with  $\Delta t$ : max. 2°C/h

Humidity

40 % - 60 % (no condensation) with  $\Delta RH$ : max. 5% RH/h

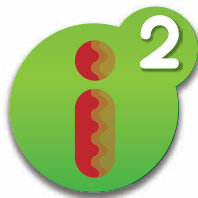
## > 07 Why buy Mutoh?

That's easy. **Because experience matters!** Mutoh is one of the world's leading manufacturers of high quality wide format piezo drop on demand inkjet printers and sign cutting plotters, setting the standard for innovation, quality, excellent customer service and local presence. We have been in business since 1953, starting with high end drafting machines, moving to pen/pencil plotter technology and cutting plotters. We have been active in the wide-format printer industry for more than 20 years. In Europe alone, more than 20000 wide format Mutoh printers and more than 25000 Mutoh cutting plotters have been installed.



### Innovation

Innovation and craftsmanship are at the heart of all our products. Mutoh was the pioneer in eco solvent printing technology back in 2002, revolutionising the outdoor sign & display market. We also developed innovative printing techniques such as our Intelligent Interweaving technology (i<sup>2</sup>) which prevents banding and facilitates a smooth workflow with best possible print results. We know piezo inkjet technology inside out.



### Quality and Reliability

Quality is the thread that runs through every Mutoh product. We know that our customers' business depends on the reliability of our equipment. Quality is integrated into every step of our production process in accordance with our ISO 9001 certified comprehensive quality management system and ISO 14001 environmental management policy.

All Mutoh products are compliant with the most stringent EU directives with regards to environment, occupational health and safety for equipment owners and operators.



**RoHS**  
Compliant

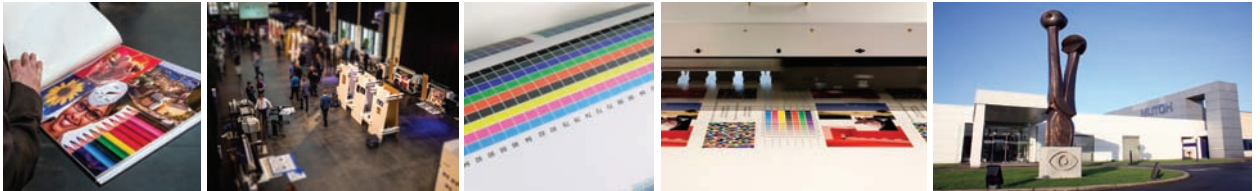




## > 07 Why buy Mutoh?

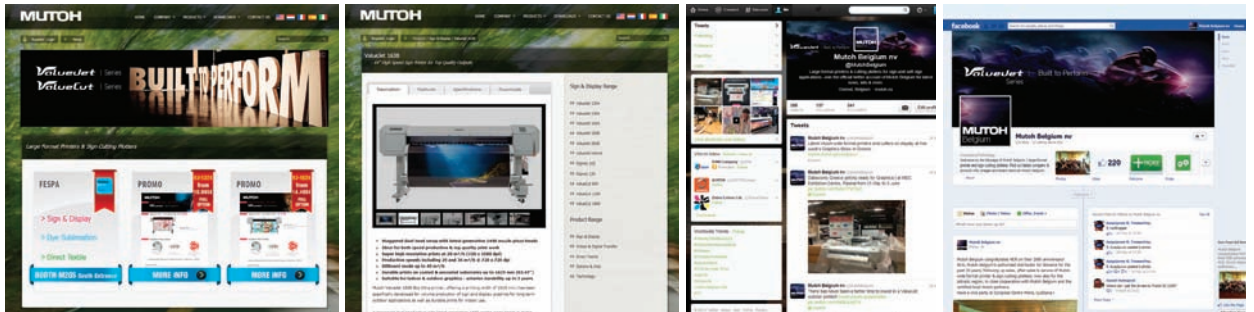
### Local Presence

Mutoh products are distributed and supported by a network of certified Mutoh authorised distributors and Channel Partners trained by Mutoh for sales, installation and after-sales support. Your local authorised reseller will assist you further in defining the right solution for your application, product pricing and return on investment.



### Be part of the Mutoh family

Customer retention is important to us. Mutoh equipment users can create a free member account at [www.mutoh.eu](http://www.mutoh.eu) to benefit from features and essential information on their Mutoh printer or cutting plotter: access to Mutoh's on-line ICC profile library offering more than 2500 ICC profiles for a variety of RIP software; drivers for Mutoh equipment, user's guides, application notes, etc...



In short, we want you to be sure of your Mutoh product – our reputation depends on it.

© MUTOH Belgium nv – June 2013. All right reserved.

Specifications are subject to change. The machines depicted on this brochure do not necessarily show a standard configuration. For some products, customised configurations are available. For further information, contact your nearest Mutoh Authorised Reseller or visit [www.mutoh.eu](http://www.mutoh.eu). All trademarks mentioned are property of their respective owners. Images in the printers courtesy of and copyrighted by Fotolia [www.fotolia.com](http://www.fotolia.com), Philipp Jeker [www.philippjeker.com](http://www.philippjeker.com), Joris Lugtigheid [www.jorislugtigheid.nl](http://www.jorislugtigheid.nl) and Peter Verplancke [www.lenzer.be](http://www.lenzer.be)



**MUTOH**

Mutoh Belgium nv  
Archimedesstraat 13  
B-8400 Oostende, Belgium  
T: +32 (0)59 56 14 00  
F: +32 (0)59 80 71 17  
E: [mutoh@mutoh.be](mailto:mutoh@mutoh.be)  
<http://www.mutoh.eu>

Distributed by:

